

The Jefferson Area Plan

*Providing exceptional educational
opportunities for all students*



Tonight's Purpose

- Update information on the proposed Jefferson Area Plan's framework for the Board of Education.
- If approved by the Board of Education on March 5, 2015, provide planned next steps to support implementation for 2015-16.



The Jefferson Area Plan

- **Focus of The Jefferson Area Plan**
 - Increase student achievement in reaching college readiness and career pathways during the PK-12 matriculation
 - Employ strategies that can be implemented in a timely and cost effective manner
 - Utilize strategies based on research and experiences connected to the student learners of the Jefferson area.
- Leveraging the collective efforts of the area schools and narrowing the focus of the strategies employed at each school are essential components to the success of this plan.
- If necessary, waivers sought as part of the Colorado Innovation Schools Act will enable the Jefferson Area to gain greater control over schedules/calendars, staffing, school operations, and their budgets. Specific waivers may be identified as part of the 2015-16 plan, or in later years, as needed and necessary to support the work.

What do we believe?

ALL STUDENTS can learn at a high level.

We have a moral imperative to significantly change the outcomes for our Jefferson Area students.



Key Elements

- **People**

- Retain and recruit effective educators committed to professional growth, professional learning, & additional time for collaboration and learning.
- Leverage & coordinate community resources to ensure students arrive at school ready to learn.
- Provide additional supports for the classroom to supplement the efforts of the professional educator as well as to provide the necessary resources for an effective multi-tiered system of supports (MTSS).

- **Structures**

- Strengthen Professional Learning Communities (PLC).
- Create a multiple pathway neighborhood school for grades **7-12** with a pre-college/career academy focus.
- Establish Stevens Elementary **PK-6 School**.

- **Programming**

- Enable academic language development (K-12).
- Expand current dual language support.
- Utilize problem-based learning (7-12).
- Utilize STEM/STEAM components and structures (7-12).

Jefferson Area Plan Development

Develop a Framework

- Principals with District Support

Gather Input & Additional Ideas

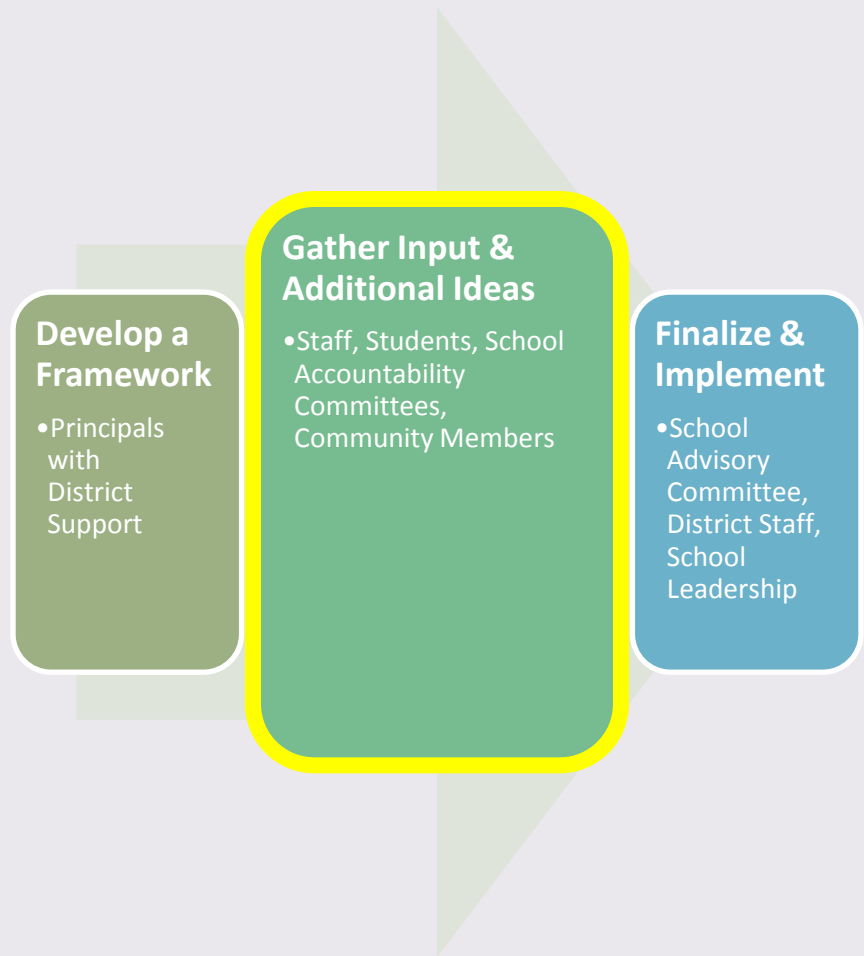
- Staff, Students, School Accountability Committees, Community Members

Finalize & Implement

- School Advisory Committee, District Staff, School Leadership

Gather Input & Additional Ideas

- Student Meetings
 - WR 6th, 7th, 8th, Grade Students
 - Lumberg, Edgewater, & Molholm 6th Grade Students
- School-level Accountability Meetings
- Stevens Parent Meeting @ Everitt -Feb. 23rd
- Jefferson Area SAC Meeting @ Jefferson HS –Feb. 24th
- Jefferson Area Community Update Meeting -Feb 25th



Advantages of a 7-12 High School

- Evidence suggests that more grade levels per building leads to better attendance rates, self-esteem, and attitudes towards school (fewer suspensions and behavior problems)
- Allows for more collaboration among teachers
- Consolidate & maximize resources to serve students
- Reduction of school-to-school transitions improves academic achievement and drop-out rates

Update: Safety and Security for 7-12

Spaces

- Identified an area at JHS where most of the 7/8 grade core classes will be held.
- Identified a bathroom designated for 7/8.
- Separate PE classes by grade level. 7/8, 9/10,11/12

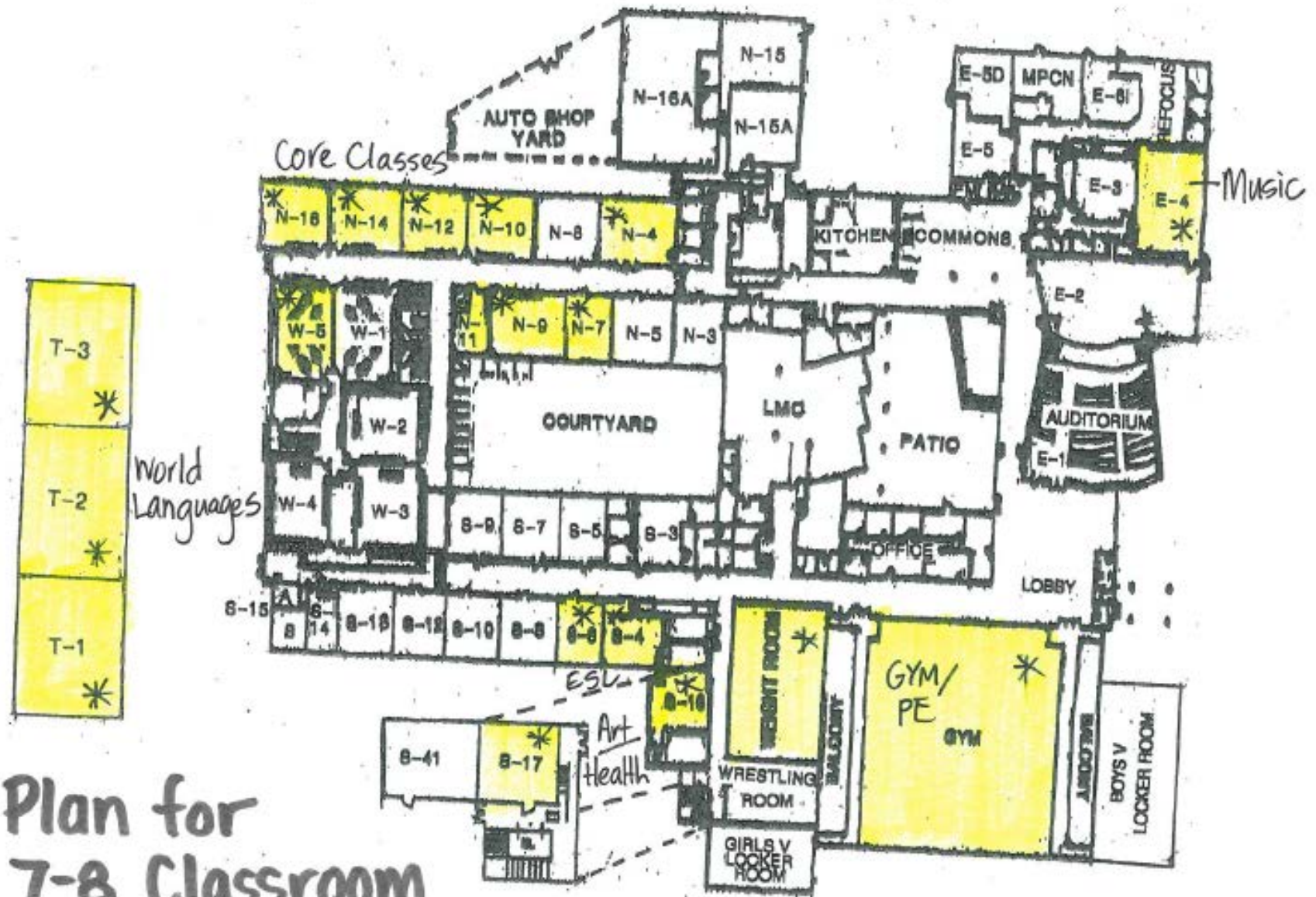
Supervision

- 4-5 Campus Supervisors will be present in halls during arrival and dismissal and during passing periods.
 - 2 assigned to 7/8 grade halls
- Administration and teachers will be outside their classrooms during arrival and dismissal and during passing periods.

Update: Safety and Security for 7-12

Schedules

- Separate lunch periods assigned 7/8, 9/10, and 11/12
- Mentor and Mentee programs for all new students. 11/12 grade students assigned to support new students.
- Spring and Summer transition meetings, activities, and communications



Plan for
7-8 Classroom
Usage *

Jefferson Senior High

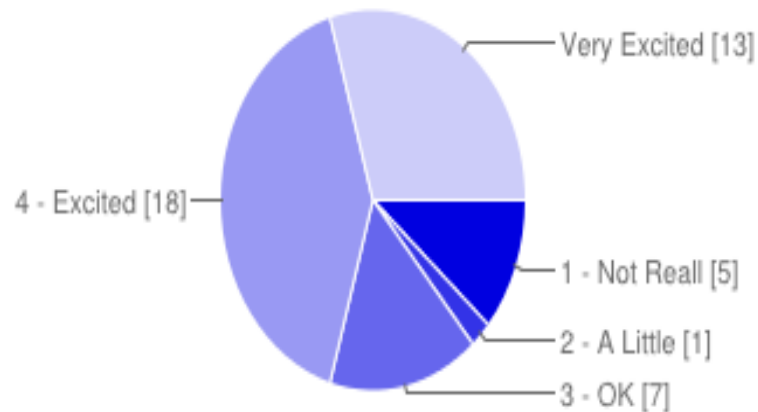
Survey Data for WR 5-8 6th Graders

44 responses

[Publish analytics](#)

Summary

Rank between 1 and 5 how excited you feel about being a part of Jefferson 7-12 School.



1 - Not Really	5	11%
2 - A Little	1	2%
3 - OK	7	16%
4 - Excited	18	41%
Very Excited	13	30%

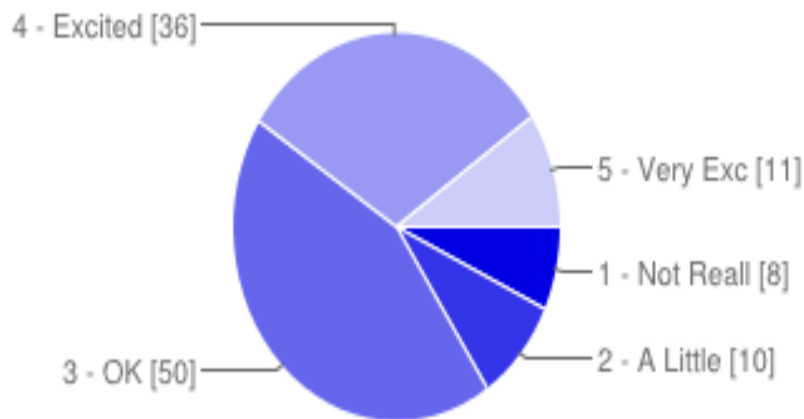
Survey Data for WR 5-8 7th Graders

115 responses

[Publish analytics](#)

Summary

Rank between 1 and 5 how excited you feel about being a part of Jefferson 7-12 school.



1 - Not Really	8	7%
2 - A Little	10	9%
3 - OK	50	43%
4 - Excited	36	31%
5 - Very Excited	11	10%

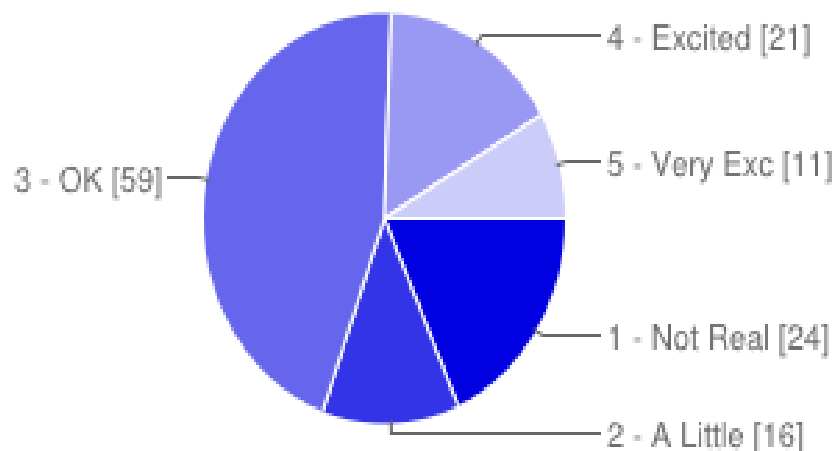
Survey Data for WR 5-8 8th Graders

131 responses

[Publish analytics](#)

Summary

Rank from 1 to 5 how excited you feel about being a part of Jefferson 7-12 school.



1 - Not Really	24	18%
2 - A Little	16	12%
3 - OK	59	45%
4 - Excited	21	16%
5 - Very Excited	11	8%

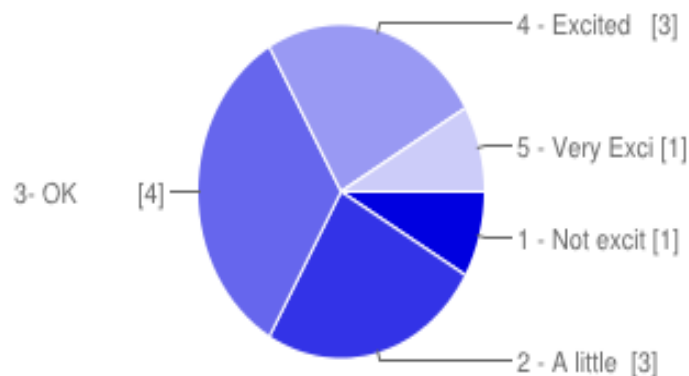
Survey Data for WR 5-8 School-level Accountability Committee (SAC)

12 responses

[View all responses](#)[Publish analytics](#)

Summary

Please rank between 1 and 5, how excited you feel about your child being a part of Jefferson 7-12. Favor C parte de Jefferson 7-12.



1 - Not excited	No Emocionada/o	1	8%
2 - A little excited	Poko Emocionada/o	3	25%
3- OK	OK	4	33%
4 - Excited	Emocionada/o	3	25%
5 - Very Excited	Muy Emocionada/o	1	8%

Cost of Facility Upgrades

- Moving 7th and 8th Graders to JHS
 - Moving expenses: \$100,000
 - Renovation expenses: \$400,000
- Moving Stevens ES to WR 5-8 Campus
 - Renovations for PK/K and Primary classrooms & bathrooms: \$500,000
 - Two exterior playgrounds: \$200,000
 - Moving expenses: \$100,000
- Move of Sobesky to Stevens ES Campus
 - Renovations to support Sobesky program \$300,000
- Total Estimated Cost \$1.6 M

Staff Advisory Committee

- Committee Members
 - Classified, Two-Teachers, and School Principal
 - ELL/Dual Language, Title Programming, Student Engagement & Diversity Office, Educational Research & Design, Student Support Services
 - School Innovation & Effectiveness Team
- First Meeting: February 2nd
 - Deep understanding of plan framework
 - Initiated work on narrowing focus
- Second Meeting-February 23rd
 - Propose final strategies for each element for 2015-16
 - Outline possible metrics for determining effectiveness as well as progress monitoring of the plan

Key Points on Innovation Status

- The Jefferson Plan does not assume the use of Innovation Status. The plan has innovation status as a possible option. The request for an innovation status will depend on the final strategies/structures to be implemented for the 2015-16 school year.
- Innovation status allows a district assigned (a.k.a. “neighborhood school”) the ability to access waivers, and thus flexibility, similar to charter schools while remaining district schools with negotiated agreements, supports, and management.
- An innovation status is a specific item and only the specific requested waiver is granted, it does not allow for waivers to be assumed that are not specifically requested or approved by the Board of Education and CDE.

Revised Articulation Structure

Wheat Ridge Articulation

- Elementary Schools
 - Kullerstrand (206), Maple Grove (362), Pennington (205), Prospect Valley (507), ***Stevens (466)**, **Stober (287), Vivian (184), Wilmore-Davis (343)
 - Total of eight ES (2,560)
- Middle School
 - Everitt MS (346)
 - Addition of 7-8 GT Center Program (*396)
- High School
 - Wheat Ridge HS (1265)

Jefferson Articulation

- Elementary Schools
 - Edgewater (497), Lumberg (520), Molholm (558),
 - Total of three ES (1,575)
- Middle-High School
 - ***Jefferson 7-12 (785)**

*Estimates based on current enrollment in WR 5-8

**Stober & Everitt enrollment numbers exclude the Stober North program

Addressing the Wheat Ridge Education Alliance Recommendations

1. Request to have Stevens ES align to Everitt MS
 - Incorporated into the proposed plan
2. Add GT Center Program at Everitt MS to Align with Stevens and Wheat Ridge HS
 - Incorporated into the proposed plan
3. Maintain Stevens ES
 - Facilitated in the proposed plan

Addressing the Wheat Ridge Education Alliance Recommendations (Continued)

4. Move Everitt MS into WR 5-8 Campus
5. Move Manning MS (Option) to Everitt MS Campus
6. Divide Maple Grove into a K-3 and 4-6

These recommendations have been thoughtfully reviewed by school leaders and district staff. A community meeting is under development for further conversation; however, the ability to serve our Special Education students in the area as well as the Stevens ES program for the Wheat Ridge community would be significantly impacted by this aspect of the proposal.

Progress to Date & Next Steps

Progress

- Review & integration of community, student, staff insight
- Realign GT program
- Leadership of 7-12 Jefferson HS identified
- Staff Advisory Committee and school leadership developing final details

Next Steps

- Respond to BoE questions
- Community Update Meeting (Feb. 25th)
- Secure BoE approval of school re-alignment
- Initiate project plan
- Implement supports for 2015-16 School Year

Questions?

Every decision we make needs to keep students at the center.

