

Demographic Analysis and Enrollment Projections for the Austin ISD

January 10, 2011

Presenter: Dennis Harner, Ph.D.
Harner and Associates

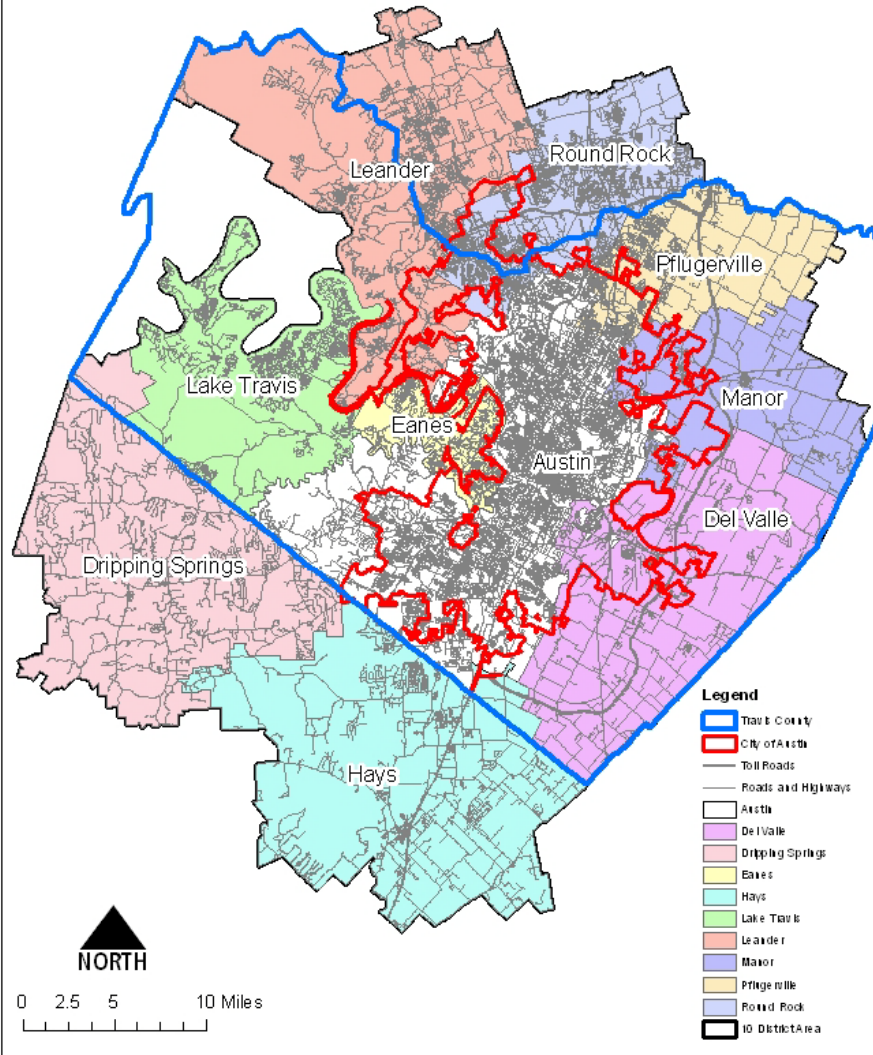
Major Elements

- Regional Setting (new this year)
- Geographical Information System update
- District Enrollment Projections
- Housing Trends
- Small Area Enrollment Projections
- Build-out Analysis (redone this year)

Regional Setting

- AISD is surrounded by 9 districts.
- Map 1 shows these districts.
- AISD is largest (85,000), followed by Round Rock (43,000), Leander (30,000), and Pflugerville (22,000).
- Most growth in last decade in Leander (+17,000) and Round Rock (+13,000).
- AISD was only district to decline in African-American enrollment.
- All districts grew in Hispanic enrollment.
- AISD had largest increase in both ELL and FRL enrollment.

Map 1. Austin ISD and Neighboring Districts



American Community Survey (ACS)

- The ACS from the Census Bureau will provide survey data every year.
- ACS is not the same as the census which was taken in 2010.
- For future reference, Table 2 of the demographic report shows some historical trends in age, race and ethnicity, family structure, education, employment, and housing.

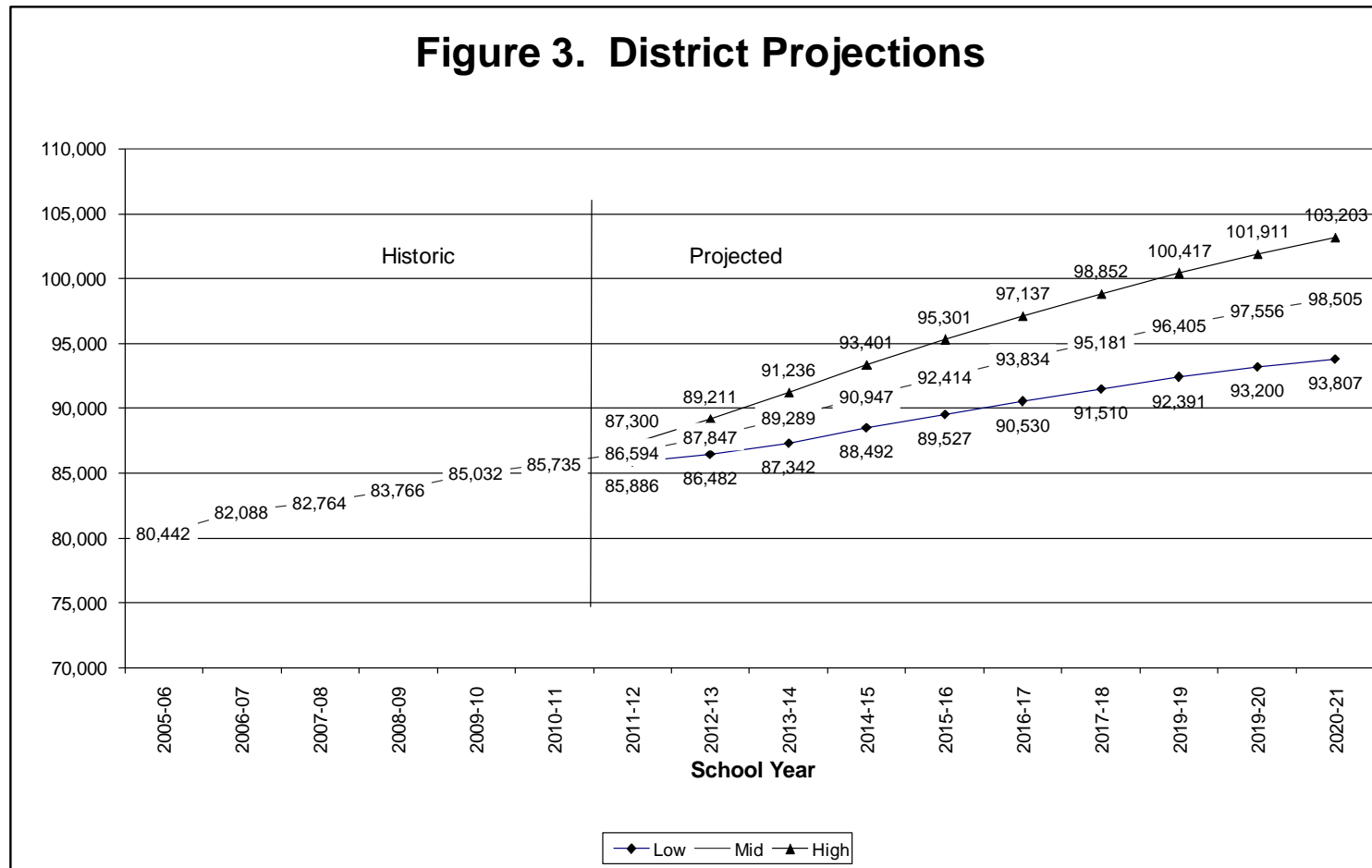
GIS Update

- Geocoded all students and compiled data at the planning area and assignment area level.
- For future reference, Maps 4 through 10 of the demographic report show results.

District Enrollment Projections

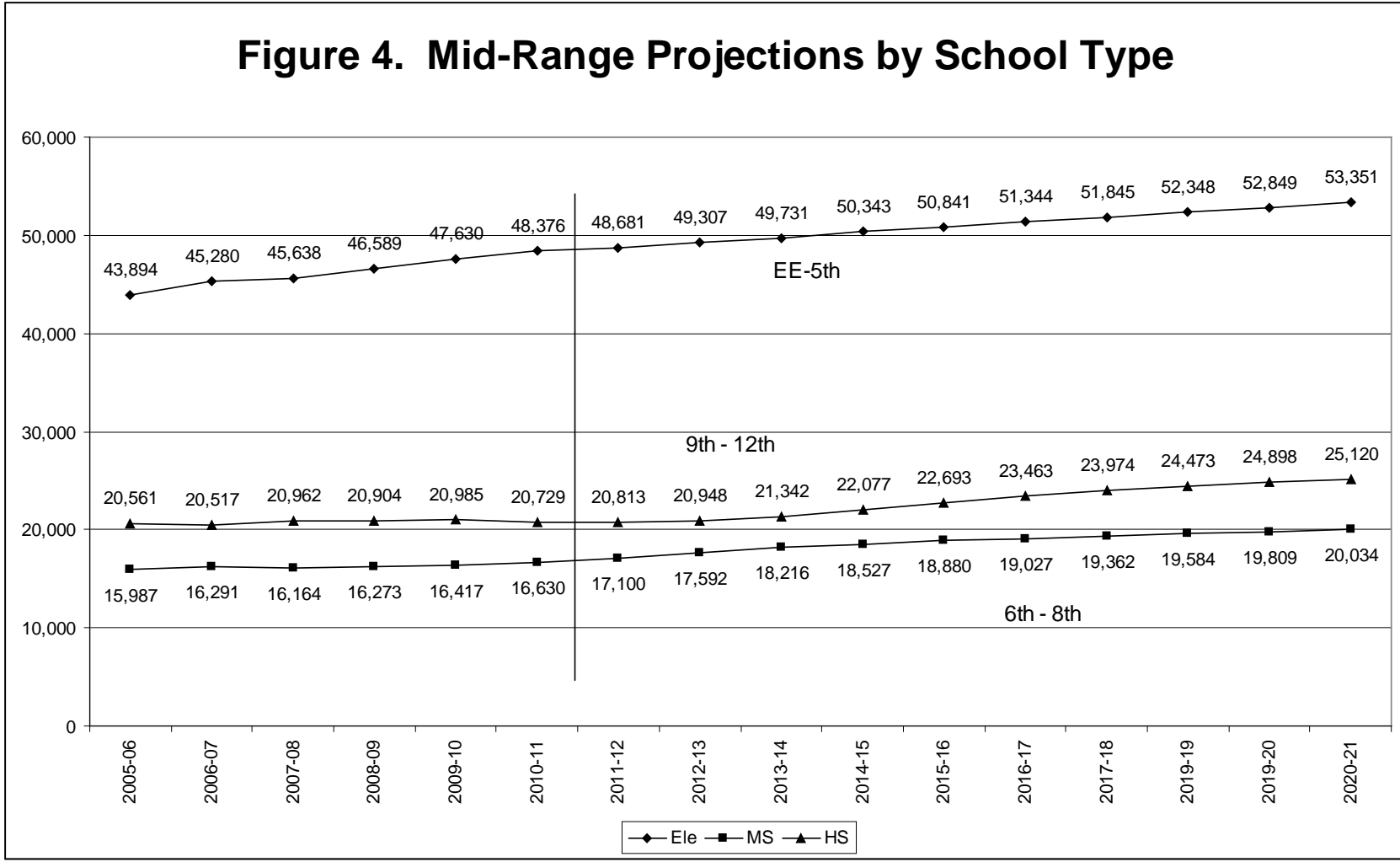
- Mid-range from 2009-10 report was for 86,133 in 2010-11,
- Actual was 85,735. Under by 398, or less than 0.5%.

Mid-range shows increase of 6679 through 2015.



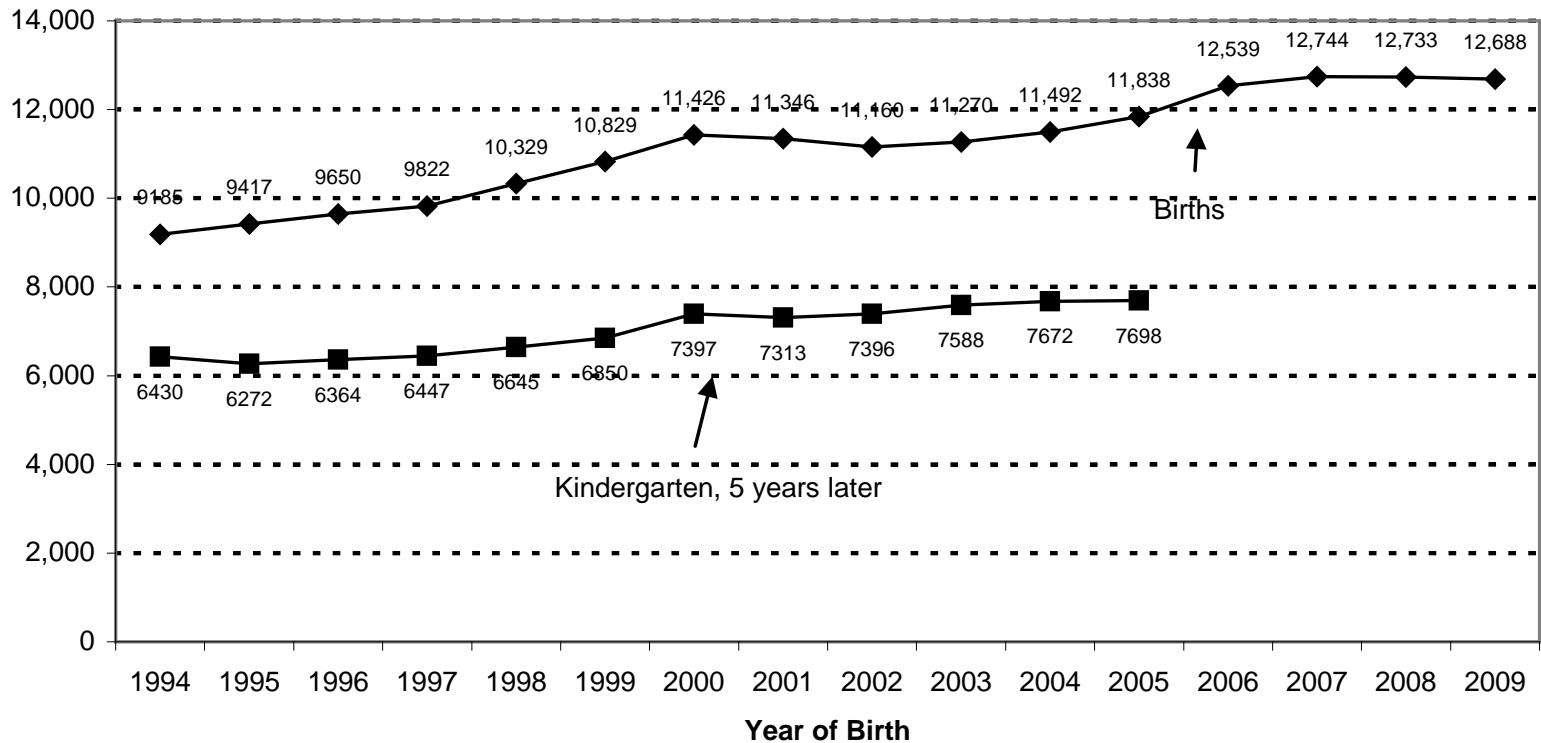
Most growth at elementary grade (2507), followed by middle school (2050), and high school (1839)

Figure 4. Mid-Range Projections by School Type



Birth trend still portends growth in kindergarten and pre-kindergarten

Figure 5. Births and Kindergarten Enrollment



◆ Births ■ Kinder. 5 years later

Housing Trends

- Travis County Appraisal District parcel data is source of baseline data.
- For future reference, Maps 13 through 22 of the demographic report show distributions.

Dramatic decline in both single family and multi-family housing construction

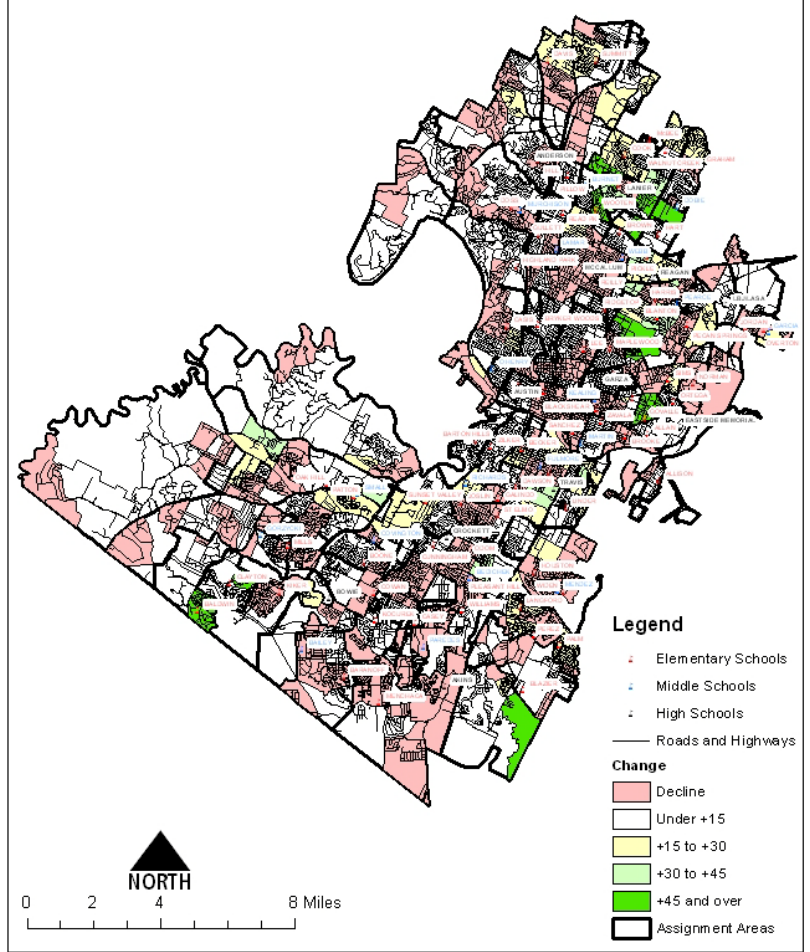
Table 8. Quarterly AISD Single Family Construction Summary

	Q1-2008	Q2-2008	Q3-2008	Q4-2008	Q1-2009	Q2-2009	Q3-2009	Q4-2009	Q1-2010	Q2-2010	Q3-2010
Annual Starts	1502	1398	1537	1366	1319	1212	1088	984	995	989	861
Quarterly Starts	248	367	486	313	192	278	319	219	214	266	172
Annual Closings	1516	1235	1377	1366	1435	1288	1187	1168	1043	994	1022
Quarterly Closings	359	316	372	413	359	273	272	333	237	234	259

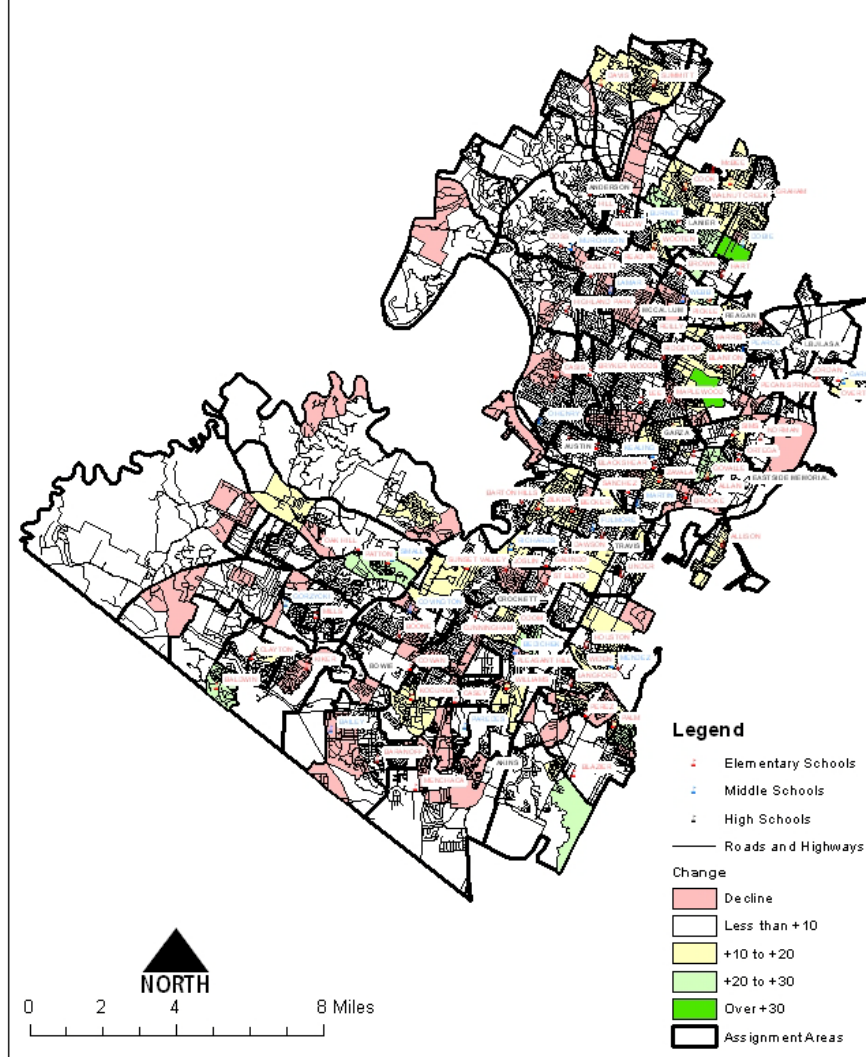
Source: MetroStudy

Small area enrollment projections

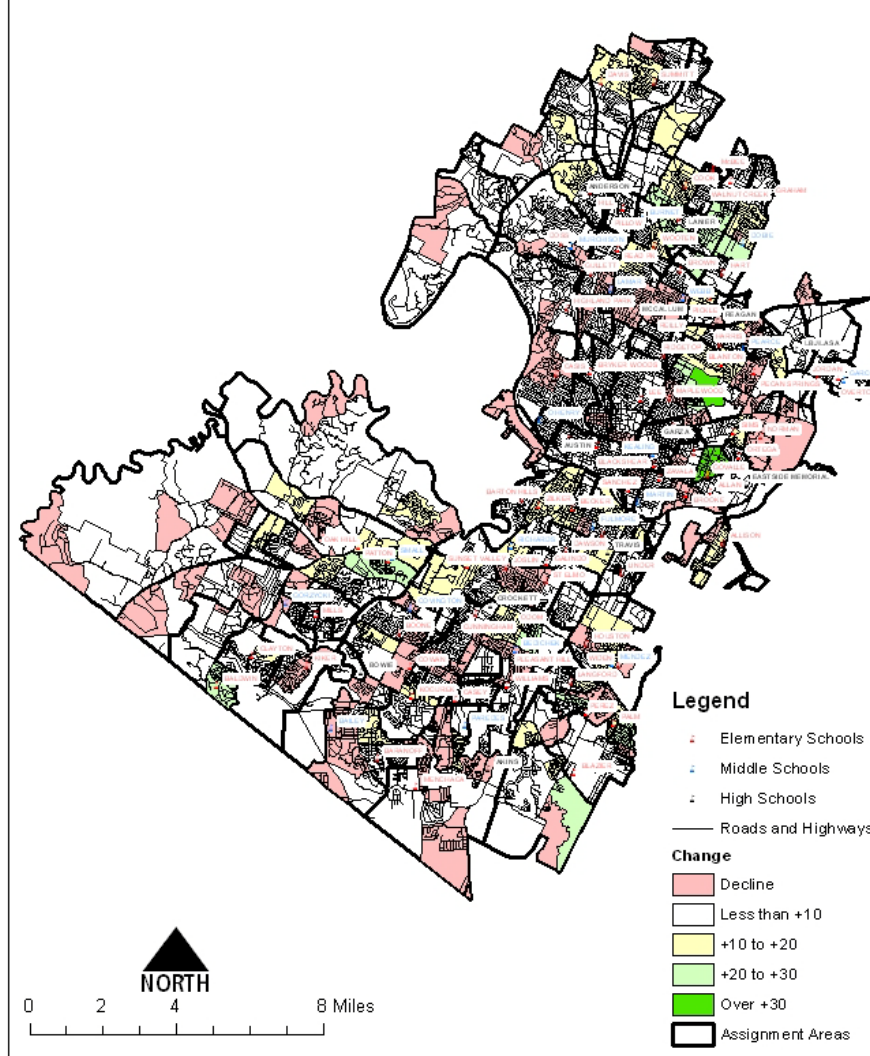
Map 28. Elementary Change Through 2015



Map 29. Middle School Change Through 2015



Map 30. High School Change Through 2015



Build-out analysis

- Over 109,000 eventually
- +13,000 elementary
- +5000 middle school
- +6000 high school

Largest growth in southeast and at Mueller

