



Transition Update

School Consolidation and Closings

Board of Education Meeting
Tuesday, February 14, 2012
Dr. Carol Pallas



Transition Update

- Board of Education voted 9-0 on January 24, 2012 to approve Superintendent Deane-Williams recommendations:
 - Move West Ridge to Parkland and create an attendance zone around WR





Transition Update

- Create a K-5 School at Brookside to include Parkland students not in new WR attendance zone
- Move Kirk Road students to Paddy Hill to create a new Paddy Hill K-5 school





Transition Update

- Create an attendance zone around Pine Brook
- Eliminate signature schools and elementary open enrollment for new students September 2012





Transition Update

- Move Odyssey Academy 6-12 to Apollo-create a new attendance zone
- Implement a two-year transition plan at Olympia, creating 6-12 school at Olympia in 2014-15





Transition Update

- Ensure a smooth transition plan and focus on improving achievement through expansion and replication of effective practice
 - Appoint a formal transition team
 - Simplify the school choice selection process
 - Continue to work toward ensuring that the student populations at Schools of Choice reflect district demographics
 - Focus instructional resources on expanding effective practices



Transition Update

- Week One-Jan 25-February 3, 2012
 - Responded to phone calls/email inquiries related to school consolidation (approx 45 per day)
 - Created new flyers following meeting to clarify recommendations





Transition Update

- Week One-Jan 25-February 3, 2012
 - Developed website just for school consolidation:
 - www.gcsdconsolidation.org
 - Consolidation@greece.k12.ny.us
 - 966-2600





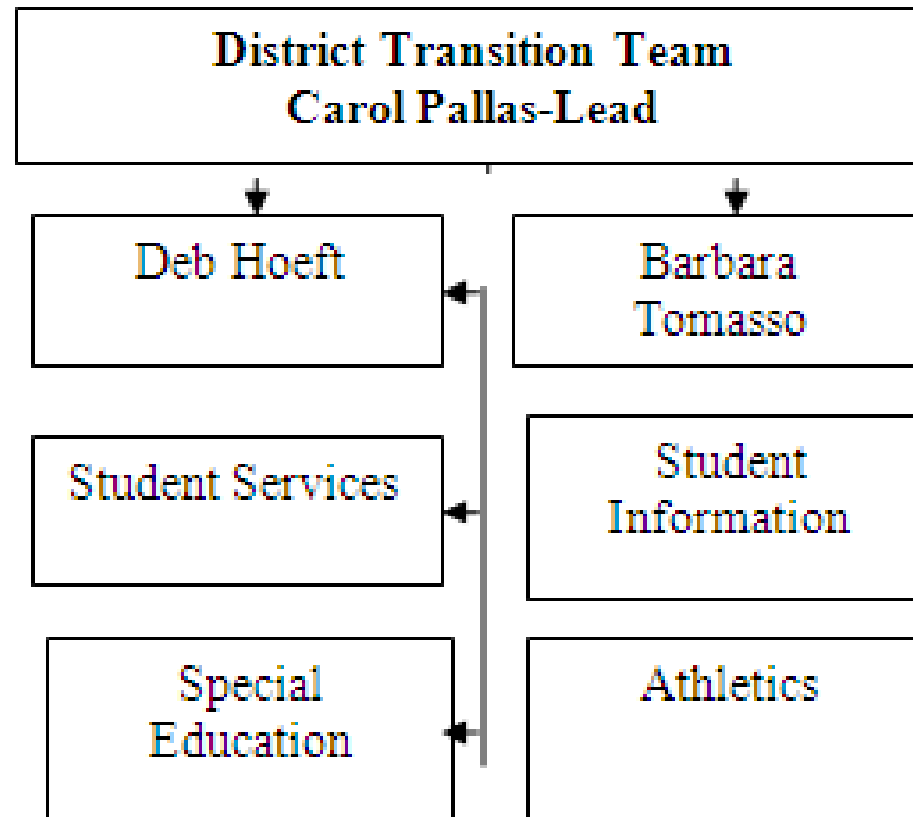
Transition Update

- Established lead and functional transition teams who then developed written timelines for transition process:
- District teams



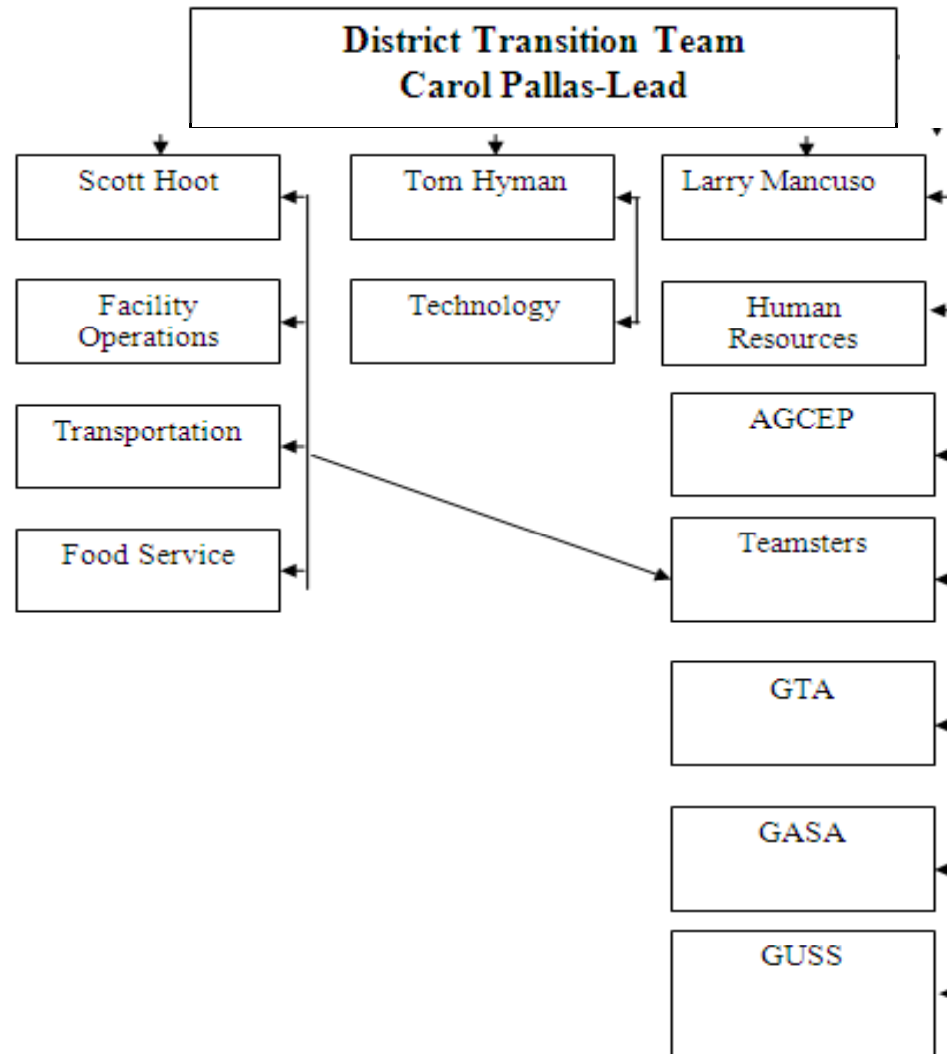


Transition Update



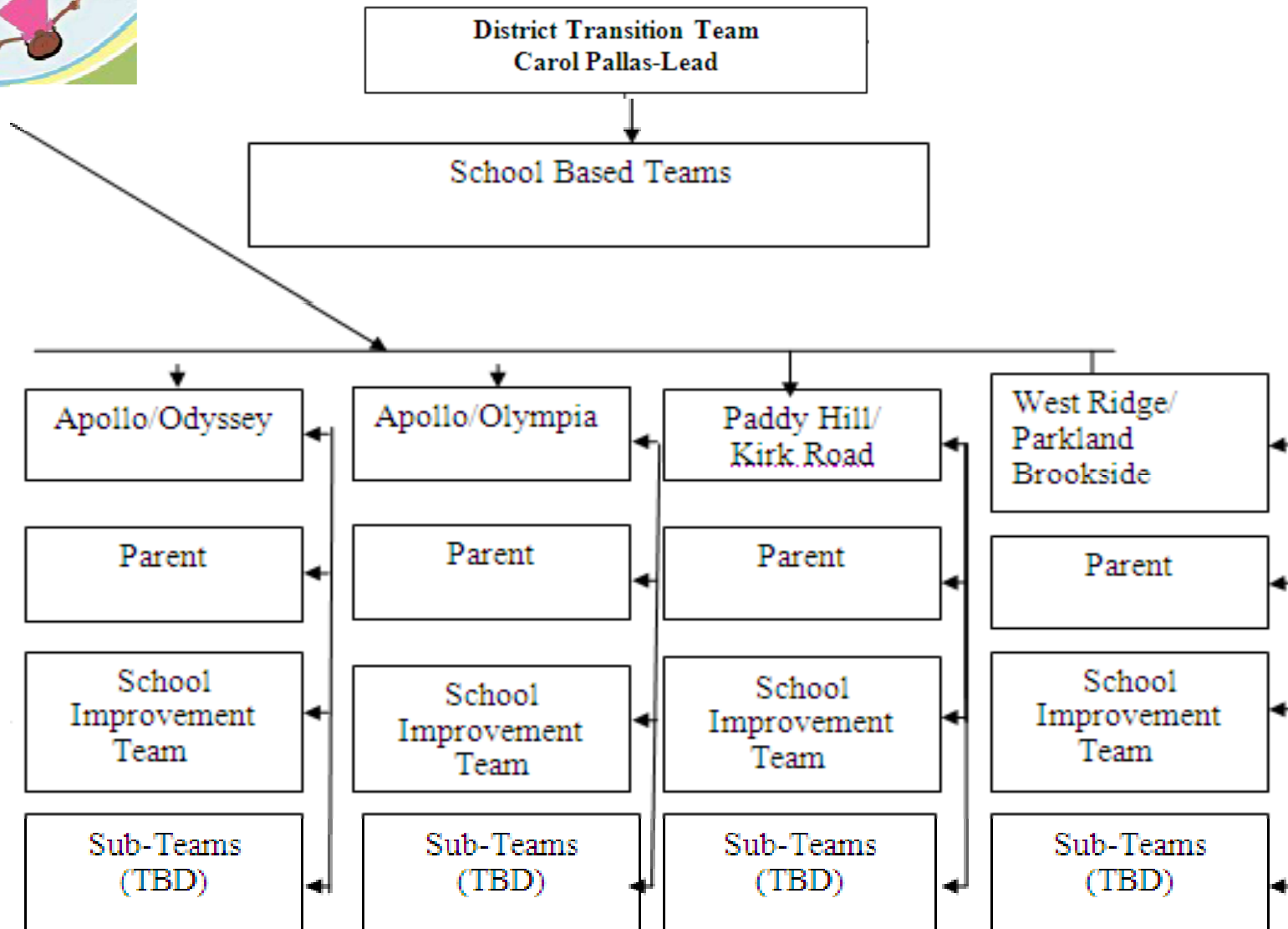


Transition Update





Transition Update





Transition Update

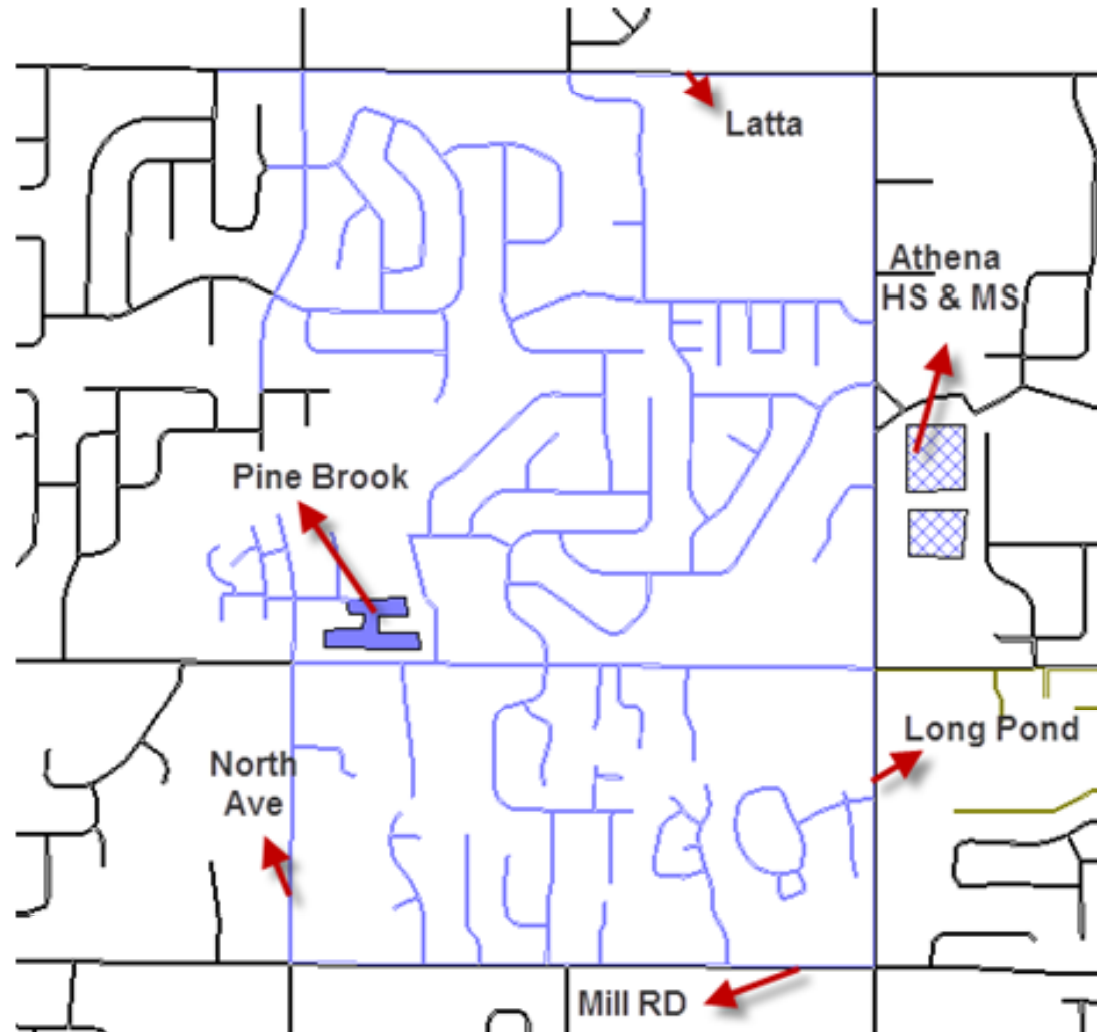
- Attendance boundaries set
- Final recommendations for boundary zones approved by Cabinet and provided to Superintendent





Transition Update

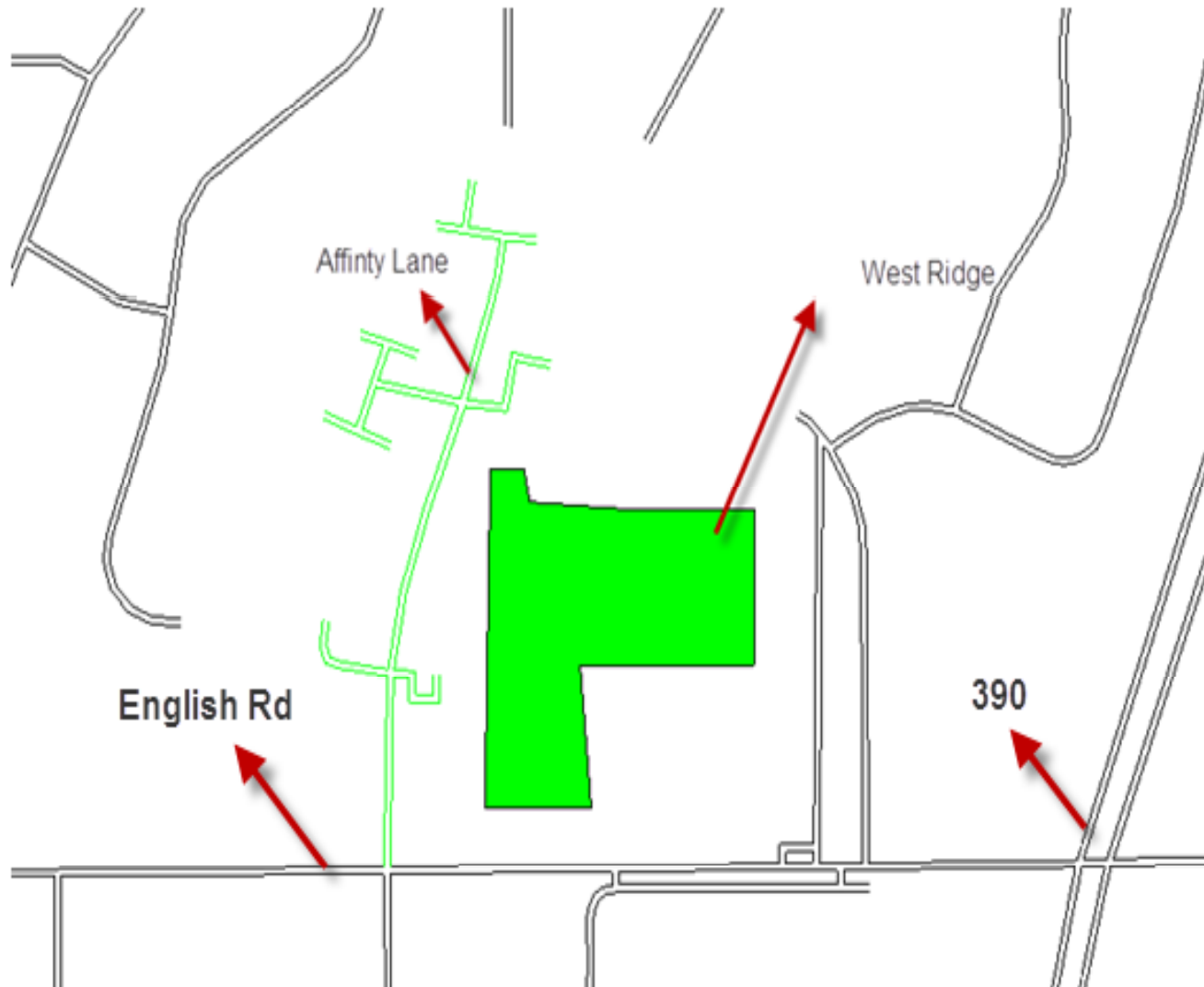
Pine Brook attendance zone





Transition Update

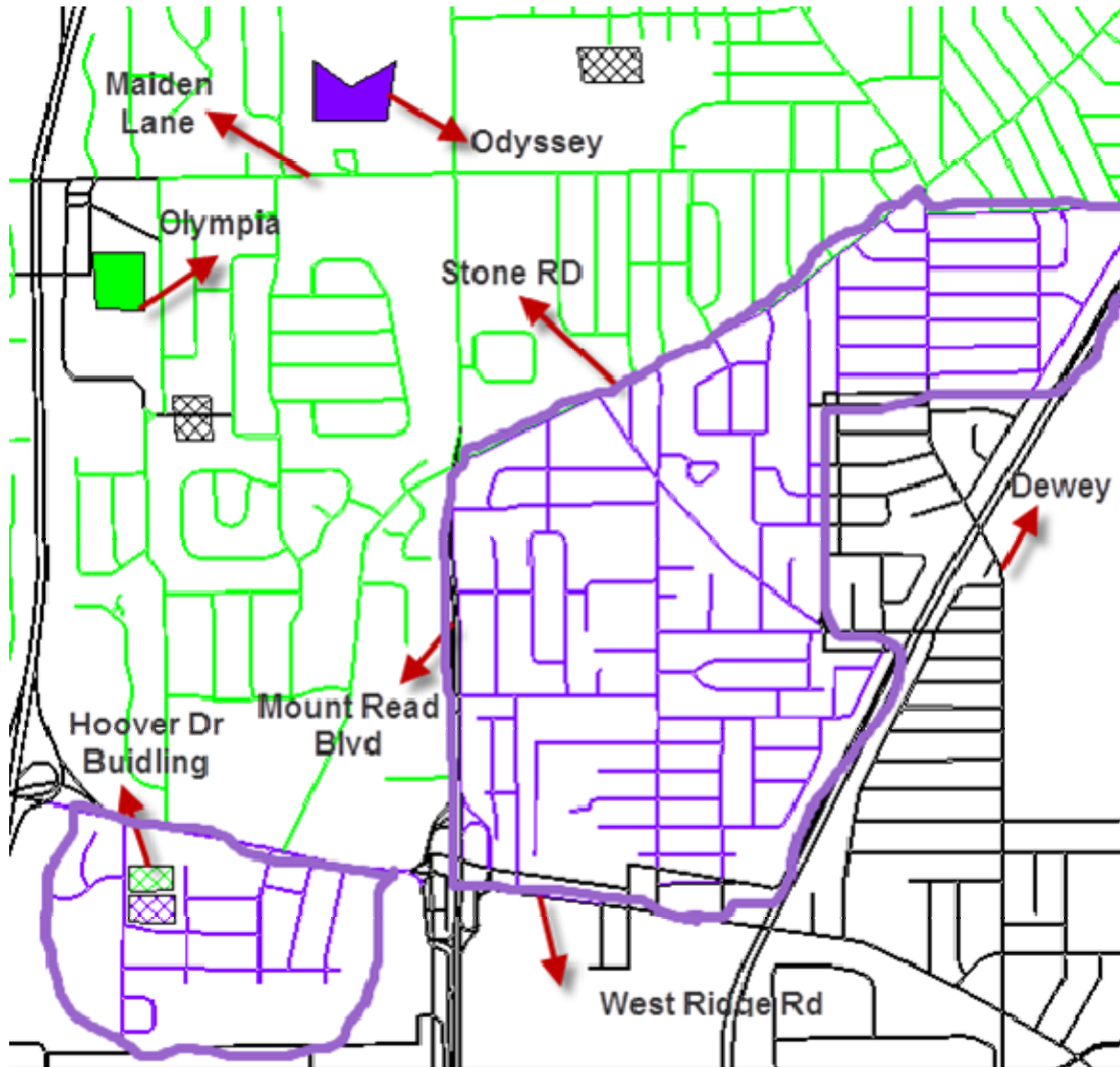
This is the attendance zone for West Ridge





Transition Update

Odyssey Attendance Zone





Transition Update

- Updated address file (pupil accounting manual) to align with attendance zones
- Worked in conjunction with Monroe #1 BOCES to make changes in Infinite Campus (student management system)





Transition Update

- Student Information team verified changes made by Monroe #1 BOCES
- Student letters ready to mail to parents indicating student attendance zones and information pertaining to applications for Schools of Choice and Secondary Option



Transition Update

Secondary Option Application

PLACE TAPE HERE

PLACE TAPE HERE

Place Stamp Here

Office of Student Services
Greece Central School District
P.O. Box 300
North Greece, New York 14515-0300


2012-13 Secondary Option Application

Three Easy Steps

1. Complete the form.
2. Refold it, seal with tape, and affix a stamp.
3. Return completed form by March 2, 2012.

NO POSTAGE
NECESSARY
IF MAILED
IN THE
UNITED STATES

PO, Box 300
14515-0300 NY 14515-0300





Transition Update

Secondary Option Application

GREECE CENTRAL SCHOOL DISTRICT

2012-13 School Assignment and Secondary Option Application

2012-13 School Assignment Notification

Your child is projected to attend _____ for the 2012-13 school year.

If your child receives special education services, the exact program and school placement will be determined pending the Committee on Special Education process.

Secondary Option Application

Parents of students currently in grades 6-11 can apply to schools other than their home attendance school through Secondary Option. Admission is granted on a space available basis.

Please complete this application only if you are interested in applying for Secondary Option. Otherwise, your child will attend the school noted above and you do not need to return this form.

Please return this form by March 2, 2012.

STUDENT NAME _____

STUDENT HOME ADDRESS _____

ZIP _____

HOME PHONE _____

CURRENT SCHOOL _____

CURRENT GRADE _____

I am interested in my child attending the following (you can select more than one):

- Arcadia Middle School/Arcadia High School
- Athena Middle School/Athena High School
- Olympia Middle School(7-8)/High School

PLEASE NOTE: You cannot apply to attend Odyssey Academy through Secondary Option. The Odyssey application process is only open to incoming sixth-graders.

Do you currently have another child who attends a secondary school outside of your home attendance area? If so, and you want your children to attend the same school, please provide the following information:

NAME OF SIBLING _____

SCHOOL HEADING CURRENTLY ATTENDS _____

PLEASE NOTE: Siblings are not automatically admitted through Secondary Option. They are considered on a space available basis.

PARENT/GUARDIAN SIGNATURE _____

DATE _____

Fax completed applications to 581-5205 OR return to your child's school OR
refold this document so the return address label is facing out, tape it closed, affix a stamp, and mail it to
Greece Central School District.

For more information, please call (585)-966-2600 or email your questions to consolidation@greece.k12.ny.us
Please visit gcsdconsolidation.org for information on the school consolidation process
and to see a complete street-by-street listing of district attendance zones.



Transition Update

Incoming Kindergarten Notification

GREECE CENTRAL SCHOOL DISTRICT

2012-13 Incoming Kindergarten Notification and Schools of Choice Application

2012-13 School Assignment Notification

Based on your address, your child is projected to attend kindergarten at _____.

If your child receives special education services, the exact program and school placement will be determined pending the Committee on Special Education process.

Elementary Schools of Choice Application

Parents of students entering kindergarten can apply to schools other than their home attendance through the Elementary Schools of Choice program. Enrollment is based on a tiered priority system as follows:
1) attendance zone, 2) sibling priority, and 3) weighted lottery. A public lottery will be held in March for any available seats in the Schools of Choice. Names of students not selected at the public lottery will be kept on file until the end of the 2012-13 school year.

Please complete this application only if you are interested in applying for Elementary Schools of Choice Option. Otherwise, your child will attend the school noted above and you do not need to return this form.

Please return this form by March 2, 2012.

STUDENT'S NAME _____

STUDENT'S HOME ADDRESS _____

ZIP _____

PHONE NUMBER _____

CURRENT SCHOOL _____

CURRENT GRADE _____

I am interested in my child attending the following (you can select more than one):

- Pine Brook Elementary
 West Ridge Elementary

Do you currently have another child who attends Pine Brook or West Ridge Elementary?

If so, and you want your children to attend the same school, please provide the following information:

NAME OF SIBLING _____

SCHOOL HIS/HE CURRENTLY ATTENDS _____

PLEASE NOTE: Siblings are not automatically admitted through Elementary Schools of Choice Option. They are considered on a space available basis.

PARENT/GUARDIAN SIGNATURE _____

DATE _____

Fax completed applications to 581-8205 OR return to your child's school OR
refold this document so the return address label is facing out, tape it closed, affix a stamp, and mail it to
Greece Central School District.

For more information, please call (585)-966-2600 or email your questions to consolidation@greece.k12.ny.us

Please visit gcsdconsolidation.org for information on the school consolidation process
and to see a complete street-by-street listing of district attendance zones.



Transition Update

School of Choice and Secondary Option Application
for incoming sixth grade only

GREECE CENTRAL SCHOOL DISTRICT

2012-13 School Assignment and School of Choice, Secondary Option Application

FOR INCOMING SIXTH GRADE STUDENTS ONLY

2012-13 School Assignment Notification

Your child is projected to attend _____ for the 2012-13 school year.

If your child receives special education services, the exact program and school placement will be determined pending the Committee on Special Education process.

School of Choice, Secondary Option Application

Parents of students entering sixth grade can apply to schools other than their home attendance school through School of Choice or Secondary Option. Enrollment in sixth grade at Odyssey Academy, the Secondary School of Choice, is based on a tiered system as follows: attendance zone, sibling priority and then weighted lottery. A public lottery will be held in March 2012 for available seats at sixth grade for Odyssey Academy.

Please complete this application only if you are interested in applying for Schools of Choice or Secondary Option. Otherwise, your child will attend the school noted above and you do not need to return this form.

Please return this form by March 2, 2012.

STUDENT'S NAME _____

STUDENT'S HOME ADDRESS _____

ZIP _____

PHONE NUMBER _____

CURRENT SCHOOL _____

CURRENT GRADE _____

I am interested in my child attending the following (you can select more than one):

- Arcadia Middle School/Arcadia High School Odyssey Academy
 Athena Middle School/Athena High School

Do you currently have another child who attends a secondary school outside of your home attendance area? If so, and you want your children to attend the same school, please provide the following information:

NAME OF SIBLING _____

SCHOOL HE/SHE CURRENTLY ATTENDS _____

PLEASE NOTE: Siblings are not automatically admitted through Schools of Choice or Secondary Option. They are considered on a space available basis.

PARENT/GUARDIAN SIGNATURE _____

DATE _____

Fax completed applications to 581-8205 OR return to your child's school OR
refold this document so the return address label is facing out, tape it closed, affix a stamp, and mail it to
Greece Central School District.

For more information, please call (585)-966-2600 or email your questions to consolidation@greece.k12.ny.us

Please visit gcsdconsolidation.org for information on the school consolidation process
and to see a complete street-by-street listing of district attendance zones.



Transition Update

School Assignment Notification for Pine Brook

GREECE CENTRAL SCHOOL DISTRICT

2012-13 School Assignment Notification

Your child is projected to attend _____ for the 2012-13 school year.

- Your address is in the new Pine Brook attendance zone, however, only incoming kindergartners within the new attendance zone are automatically enrolled. Open seats at other grade levels will be filled on a space available basis according to the following tiered structure: Tier 1: Neighborhood attendance zones; Tier 2: Sibling Priority; and, Tier 3: Weighted lottery. If you have questions about the new attendance zone, please call 966-2600.
- Students who will be in grades 1-5 in 2012-13 cannot apply to attend a School of Choice; however, if you have previously applied, your waiting list position will continue to be honored.
- If your child receives special education services, the exact program and school placement will be determined by the Committee on Special Education.

**For more information, please call (585)-966-2600 or
email your questions to consolidation@greece.k12.ny.us**

Please visit gcsdconsolidation.org for information on the school consolidation process
and to see a complete street-by-street listing of district attendance zones.



Transition Update

School Assignment Notification

GREECE CENTRAL SCHOOL DISTRICT

2012-13 School Assignment Notification

Your child is projected to attend _____ for the 2012-13 school year.

- Students who will be in grades 1-5 in 2012-13 cannot apply to attend a School of Choice; however, if you have previously applied, your waiting list position will continue to be honored.
- Students currently attending a School of Choice or Signature School will be able to remain at those schools through fifth grade, regardless of where they live.
- If your child receives special education services, the exact program and school placement will be determined by the Committee on Special Education.

**For more information, please call (585)-966-2600 or
email your questions to consolidation@greece.k12.ny.us**

Please visit gcsdconsolidation.org for information on the school consolidation process
and to see a complete street-by-street listing of district attendance zones.



Transition-Next Steps (Two-Four Weeks)

- Transition team plans and timelines organized along with Gantt Charts that demonstrate overall plans- these are posted on the consolidation website.
- Attendance letters returned and processed-public lottery/assignments based on School of Choice/Secondary Option





Transition-Next Steps (Two-Four Weeks)

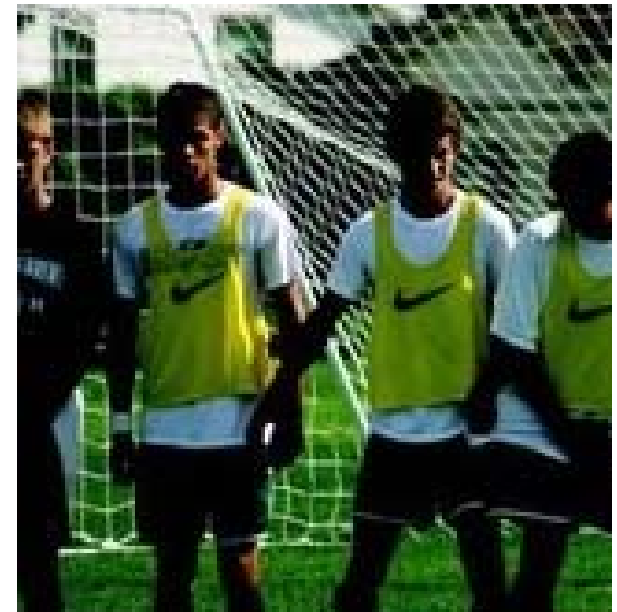
- District Transition team to meet-set course
- Staffing-
 - Administrative staffing complete and reassigned-February 6, 2012
 - Teachers-intention forms due back February 29, 2012
 - Support staff, Teamsters, AGCEP, GUSS-Human Resource team collaborating with union leadership teams





Next Steps (Two-Four Weeks)

- Athletic team meets to initiate discussion of schedules and facility usage
- Transportation team- routing new zones as well as entire district to maximize efficiencies





Next Steps (Two-Four Weeks)

- Technology team- collaborate with building teams to identify equipment placement plans
- School-based teams have met and developed timelines and plans to collaborate with district teams





Questions?

www.gcsdconsolidation.org

966-2600



School Consolidation

